

Improving Day Opportunities for adults with a learning disability

What do you think?



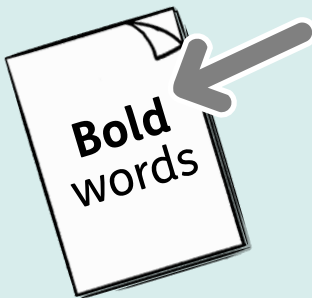
easy
read



Contents

Page

Introduction	3
The questions	4
About you	21
Get involved	29
Thank you	31
For more information	32



In this easy read document, difficult words are in **bold**. We explain what these words mean in the sentence after they have been used.

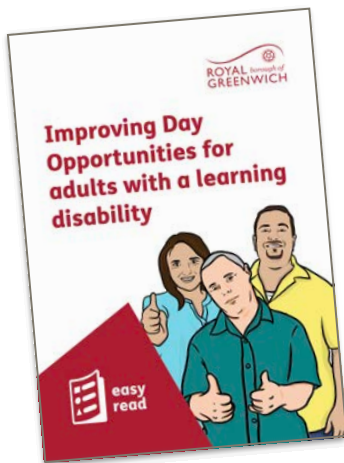


Some words are blue and underlined. These are links which will go to another website which has more information.

Introduction



The Royal Borough of Greenwich Council is looking to improve our day services for people with a learning disability - called Day Opportunities.



We have explained the changes that we are thinking about in a separate Easy Read document called “Improving Day Opportunities for adults with a learning disability”.



We want to know what you think about these ideas.

Please tell us what you think by answering these questions.

The questions

A new base



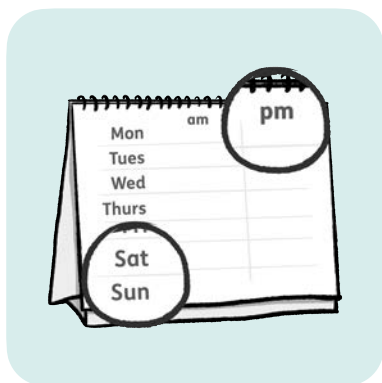
We are thinking of making a **multi-use hub** for day services at Sherard Road.

A **multi-use hub** means a building where lots of things take place and can be used by lots of different organisations and services.



We are thinking that 100 people will use this new day service.

40 of these people will use the hub and 60 people will go to activities in the local area.



The hub would also be open in the evenings and at weekends.



Question 1: Do you agree that a multi-use hub will mean people who use day services will have more choice?

☐

Yes

☐

I am not sure

☐

No

Please explain your answer.



Question 2: Do you agree that a multi-use hub will help people to be more independent?

☐

Yes

☐

I am not sure

☐

No

Please explain your answer.



Question 3a: Please tell us 3 things that you like about the idea of a multi-use hub and explain why.

What will be better?	Why?
1	
2	
3	



Question 3b: Please tell us 3 things that could be improved about the idea for a multi-use hub and explain why.

What could be improved?	Why?
1	
2	
3	



Activities in the local area

We want organisations to set up more services for people with a learning disability in the local area.



We want services that:

- help you to get ready for a job.
- support you when you are starting a new job.
- help you to be a volunteer - this means you give your time and help without getting paid for it.



We are also looking at activities that help you meet other people, like:

- drama groups.
- arts groups.
- music clubs.
- learning new skills.



Question 4a: Please tell us 3 things that you like about the ideas for activities in the local area and explain why.

What will be better?	Why?
1	
2	
3	



Question 4b: Please tell us 3 things that could be improved about the ideas for activities in the local area and explain why.

What could be improved?	Why?
1	
2	
3	

Personal Budgets



We would like more people to use their **Personal Budgets** to pay for their day services.

A **Personal Budget** is also called a direct payment. It is money given to you by the Council to pay for your own support.



There are 3 types of Personal Budget:

1. Where you, or your carers, are in charge of the money for your care.



2. Where the Council looks after for Personal Budget for you.



3. Where an independent organisation looks after your Personal Budget for you.

Question 5: Which one of these 3 options do you think would be best for you or the person you care for?



☐ Having your own control over the money for your care.

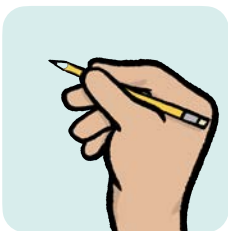


☐ Having the Council to look after your Personal Budget for you.



☐ Having an independent organisation to look after your Personal Budget for you.

Please explain why you chose that option.





Transport

We want to help more people to use different ways to travel to day services.



This includes :

- helping people learn how to use public transport, like buses.
- using community travel services.



Question 6: Please tell us any ideas you have to help people travel to services or activities in the community?

A large, empty rectangular box with a black border, intended for writing answers to the question.

What is most important

Question 7: Please tick the 3 things that are most important to you, when you think about day services.



☐ Choosing what to do



☐ Choosing when to do activities during the day



☐ Being able to do things in the evenings and at weekends



☐ Choosing where you do activities



☐ Being able to do things with friends

☐

Being able to use services at different times

☐

Being able to change if you wish

☐

Doing the same things every week

☐

Support to get a job or be a volunteer

☐

Support to be more independent

☐

Support to be active and have a healthy lifestyle

☐

Support to take part in activities about your own culture or religion

☐

Having control over what you do by having a personal budget

☐

Being able to try new things

☐

Helping carers have a real break from their caring work

☐

Services knowing who is going to come so they can make better plans

☐

Other - please say



If there is a crisis

A **crisis** is where you have a serious problem that you weren't expecting.



Question 8: How would you like us to help you if you have a crisis, or need extra help urgently?

Communicating with you

Question 9: How would you like the Council and your service to communicate with you?
Please choose 3 options.



☐ Email



☐ Phone



☐ Online video call, like Zoom or Teams



☐ A special Easy Read web page on the Council website



☐ Letters or leaflets posted to your home



☐ Easy Read letters or leaflets posted to your home



☐ Information from the different organisations that provide services



☐ At meetings for carers



☐ By a social worker or another member of staff coming to your home



☐ Other - please say



Anything else

Question 10: Is there anything else you would like to tell us?

About you

Question 11: Are you...

☐

someone who uses Sherard Road Day Centre?

☐

someone who uses another day service?

☐

someone who does activities in the community?

☐

someone who uses more than 1 adult social care service?

☐

someone who doesn't use adult care services at the moment?



☐ a carer of someone who uses services?



☐ a young person who expects to use day services in the future?



☐ the parent or carer of a young person who expects to use day services in the future?



☐ a care worker?



☐ someone from a government organisation that provides a day service?



☐ someone from a community group that provides a day service?



☐ someone from a company that provides day services?



☐ a worker at Royal Borough of Greenwich?



☐ a worker at the South East London Clinical Commissioning Group?



☐ a worker at Oxleas NHS Foundation Trust?



☐ someone else who is interested in day services?



If you work for an organisation, please say what your job is.

Question 12: Are you...



White

- ☐ British
- ☐ Irish
- ☐ Gypsy or Irish traveller
- ☐ Roma
- ☐ Other White background - please say



Mixed or more than 1 ethnic background

- ☐ White and Black Caribbean
- ☐ White and Black African
- ☐ White and Asian
- ☐ Any other mixed background - please say



Asian or Asian British

- ☐ Indian
- ☐ Pakistani
- ☐ Bangladeshi

☐

Nepali

☐

Vietnamese

☐

Chinese

☐

Any other Asian background - please say



Black or Black British

☐

African

☐

Caribbean

☐

Somali

☐

Any other Black background - please say



Other ethnic group

☐

Arab

☐

Any other ethnic group - please say

☐

Prefer not to say

Disability

Question 13: Are you disabled?

☐

Yes

☐

No

☐

Prefer not to say

If 'yes' what is your disability?

☐

A physical disability, like difficulty using your arms or legs

☐

Difficulty with eyesight or hearing

☐

A mental health condition

☐

A learning disability

☐

A long lasting illness

☐

Other - please say

☐

Prefer not to say



Gender

Question 14: What is your gender?

☐

Female

☐

Male

☐

I use another word - please say

☐

Prefer not to say

Religion or belief

Question 15: What is your religion or belief?

☐ No religion



☐ Christian



☐ Buddhist



☐ Hindu



☐ Jewish



☐ Muslim



☐ Sikh

☐ Any other religion or belief - please say

☐ Prefer not to say

Get involved

Question 16: If you would like to be involved in helping us improve day services, please tell us how to contact you.



Name



Address



Post code



Phone



Email

Question 17: How would you like to be involved?



☐ Take part in meetings



☐ Telephone survey



☐ Written survey by post



☐ Written survey by email

Thank you



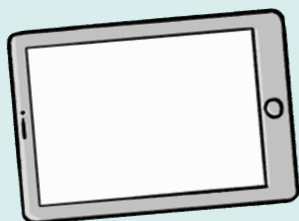
Thank you for your answers.



Please now post your answers back to us at:

Day Opportunities Service, Health and
Adult Services
The Woolwich Centre
Wellington Street
Woolwich
SE18 6HQ

For more information



You can look at our website here:

www.royalgreenwich.gov.uk



If you need more information please contact us by:

- post:
Day Opportunities Service, Health
and Adult Services
The Woolwich Centre
Wellington Street
Woolwich
SE18 6HQ



- phone: 020 8854 8888

This Easy Read information has been produced by easy-read-online.co.uk